

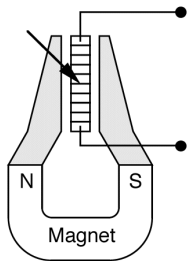
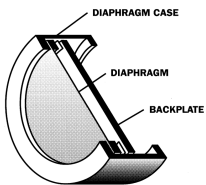
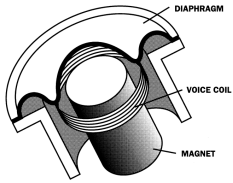
Name:

Date:

FSE – Quiz 3 sample questions

Microphone operating principles:

Identify the following 3 microphone types, then state at least one pro, one con, and one suitable application for each type (4 pts)



Scenario:

The vocalist/guitarist of a band requests 2 monitor mixes. One mix will contain only vocals (especially his/her vocals), while the other mix will contain instrumental parts only. This singer likes the vocal mix loud, so feedback is a major issue. With pickup patterns in mind, how would you go about positioning the microphone and monitors? (3 pts)

Concept Question:

Briefly discuss a few of the tradeoffs to consider when deciding between close and distant microphone placement. (3 pts)